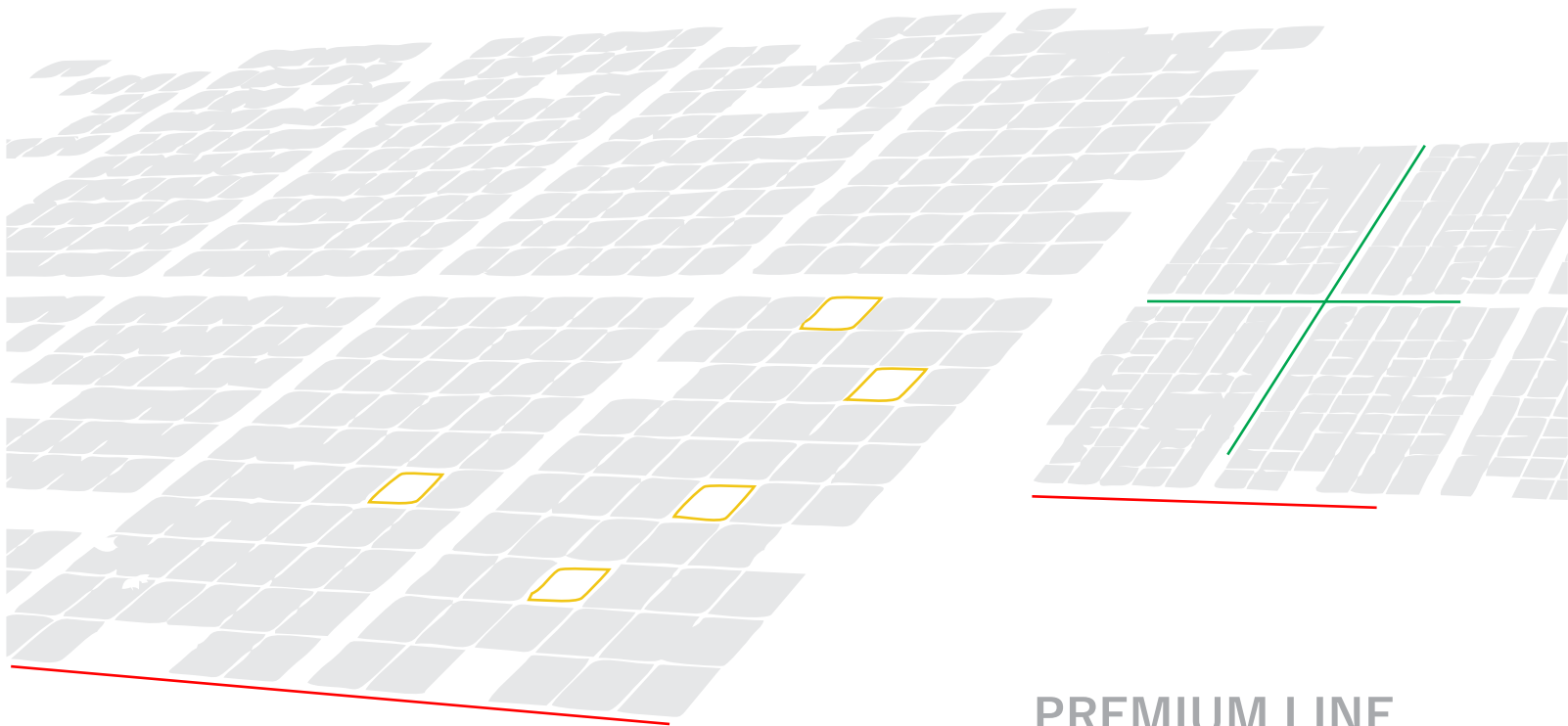




The Lightness of the Future

HYBRID PHOTOVOLTAIC MODULE

“One module, multiple benefits”



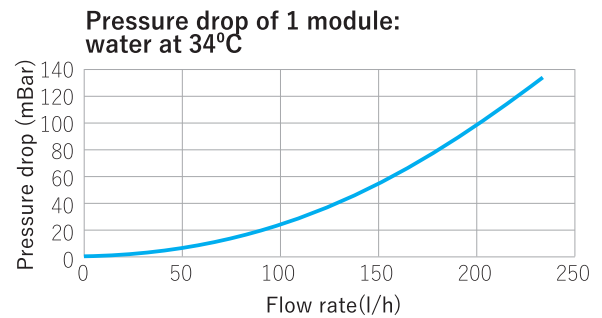
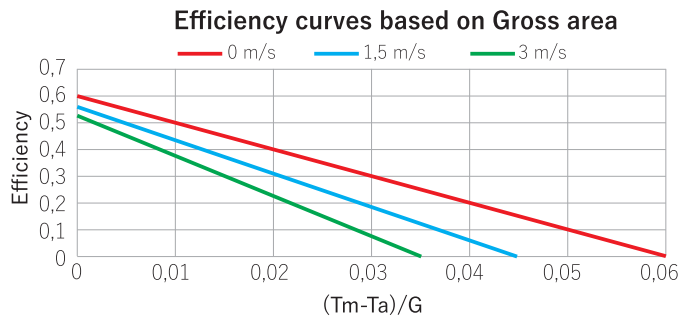
PREMIUM LINE

Main features:

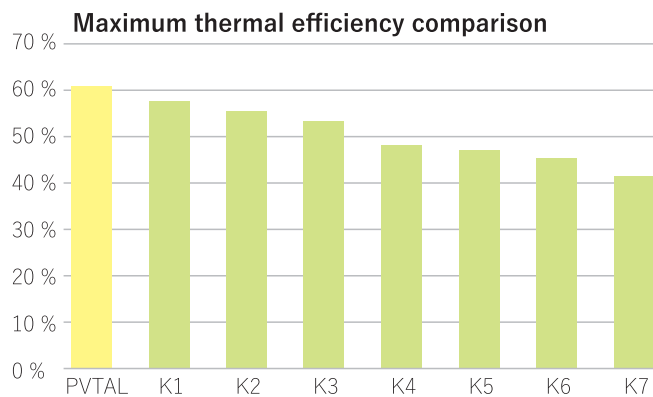
- **Best thermal performance** (thermal peak power 985 W)
- Multiple connection possibilities with **low installation costs**
- Best cooling distribution- **10–20 % improved PV performance**

PVTal V1.0

Module type	Monocrystalline / Polycrystalline 60 cells
Dimensions	1649 x 991 x 41 mm
Gross area	1,634 m ²
Modul weight	35 kg
Nominal electrical power	260 W
Peak thermal power (1000 W/m ²)	985 W
Efficiency curves	With maximum electrical power draw (MPP)
Cooling fluid	Water-Glycol 60/40
Fluid connection size	Standard ¾ inch



Tested at Solartechnik Prüfung Forschung SPF

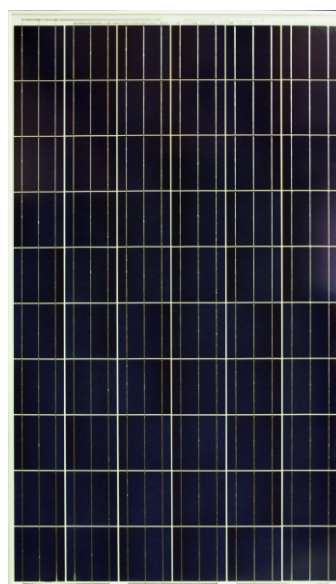


Figures based on Gross area

η_0 (-)	0.603
b1 (W/m ² K)	10.27
b2 (W/m ² K ²)	1.6897
b _u	0.037

Main features:

- Electrical and thermal energy in one compact module
- Highest thermal performance
- Well distributed cooling – improved PV performance
- Low pressure drop
- Slim design
- Multiple connection possibilities
- Connectors from the back side to optimize roof space



Patent pending